

Dehems Equipment Guide

- Transmitter & Sensor Jaw
- Data Collector
- Ethernet to Ethernet Cable
- Data Collector power supply

B Transmitter and sensor jaw



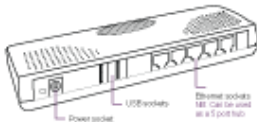
The Transmitter and Sensor Jaw [B]

The transmitter and sensor jaw does not require out any electrical wiring. It is connected to the electricity supply to by clipping around the intake supply to your property. It will not cause any damage.

- The sensor jaw can fits around a cable up to 30mm in diameter
- The battery gives power for up to 6 years.



E Data Collector



Data Collector [E]

The data collector stores your energy usage and sends it to your dashboard on the internet.

The data collector is connected to the display unit and to your router that supplies your internet connection.



Dehems Equipment Guide

F Ethernet to Ethernet cable



Ethernet to Ethernet cable [F]

The ethernet cable connects the data collector to your internet router.



G Data Collector power supply

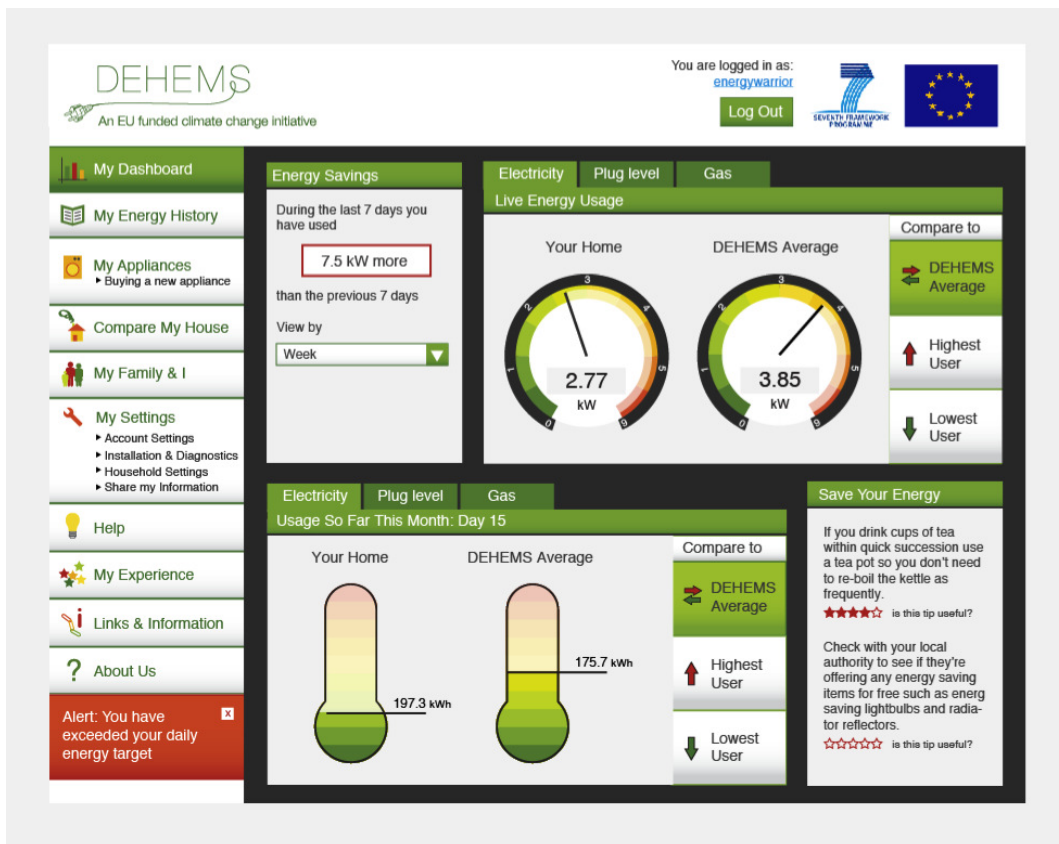


Data Collector power supply [G]

The data collector power supply, has a straight shaped plug and connects the back of the data collector to the mains supplying 12v.

Web Dashboard [J]

The web dashboard allows you to view your electricity usage on line. Here is an example of how we think it may look like.



Dehems Equipment Guide

In addition to the equipment provided by the project, you will need to have the following available:

J Access to a computer connected to the internet



Access to a computer connected to the internet [J]

Once you are connected and registered, you can follow your energy usage on the internet with your username and Password.

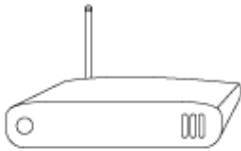
Plug Socket [H]

The requires one plug socket for the data controller. Although the equipment uses a small amount of energy, the energy saved is forth the pay off.

H Plug socket



I Internet Router



Internet |Router [I]

The data collector connects to your internet router to send your energy readings to your dashboard, so you can follow your use over the month and compare your use to other users.